

Fine Features of 9925 - 171 Ave



Click on text for:

- ☐ Colour Brochure
- ☐ Floor Plan
- ☐ Virtual Tour
- ☐ Optimized tour for Cell Phone
- ☐ Map of Home



Bruce MacPherson, B.Sc., B.A.

**“Relocation Specialist”
Real Estate Professional**

Bus: (780) 481-9060

View this home at: www.EdmontonHouses.com

E-mail: Bruce@EdmontonHouses.com

*Not intended to solicit properties already listed for sale



Noralta Real Estate



*Prestigious recognition
awarded to the TOP 1%
Royal LePage Real Estate
sales representatives in 2008.*

2008

Welcome to
9925 - 171 Avenue NW



Baturyn



BRUCE MACPHERSON, B.Sc., B.A.

"Relocation Specialist"

Real Estate Professional

Bus: 780-481-9060

View this home at: www.EdmontonHouses.com

Email: Bruce@EdmontonHouses.com

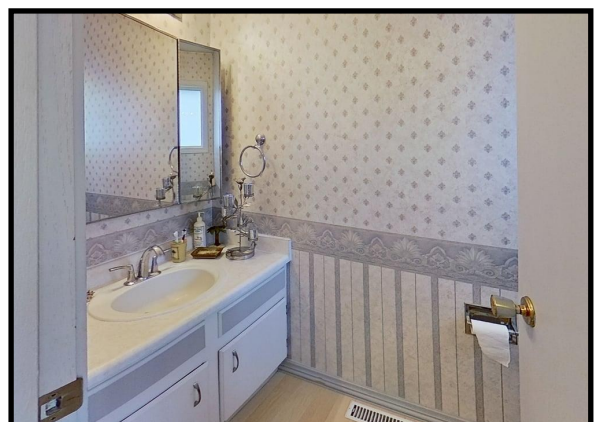
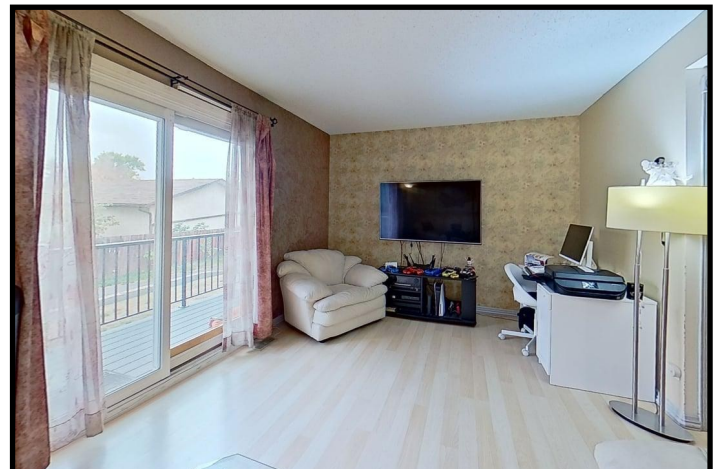


ROYAL LEPAGE

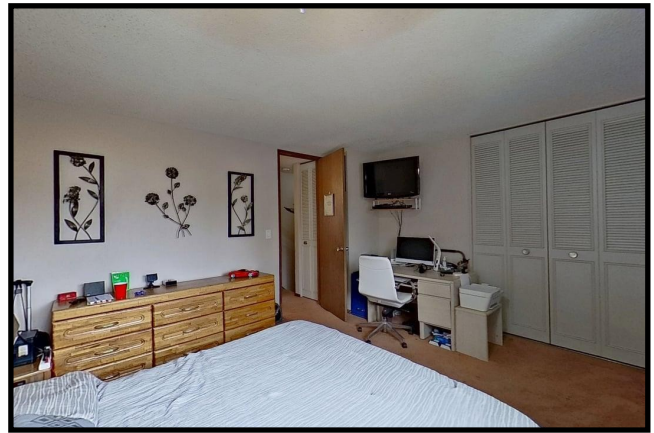
Noralta Real Estate

*Prestigious recognition awarded
to the TOP 1% nationally of
Royal LePage Real Estate sales
representatives in 2008.*

Not intended to solicit properties already listed for sale



Find Your Home on the Web at: www.EdmontonHouses.com



9925 - 171 Avenue NW



BRUCE MACPHERSON, B.Sc., B.A.

"Relocation Specialist"

Real Estate Professional

Bus: 780-481-9060

View this home at: www.EdmontonHouses.com

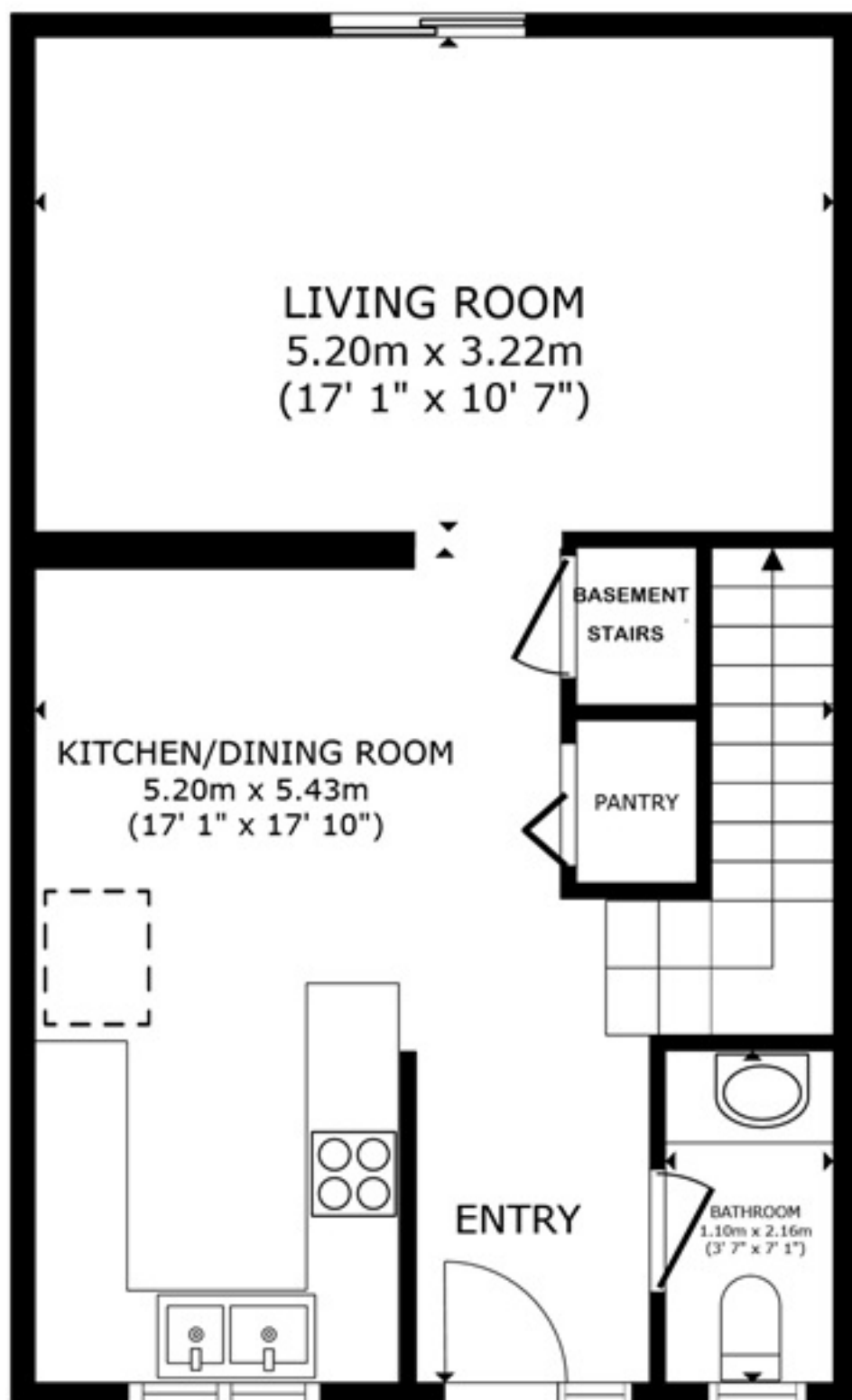
Email: Bruce@EdmontonHouses.com



ROYAL LEPAGE
Noralta Real Estate

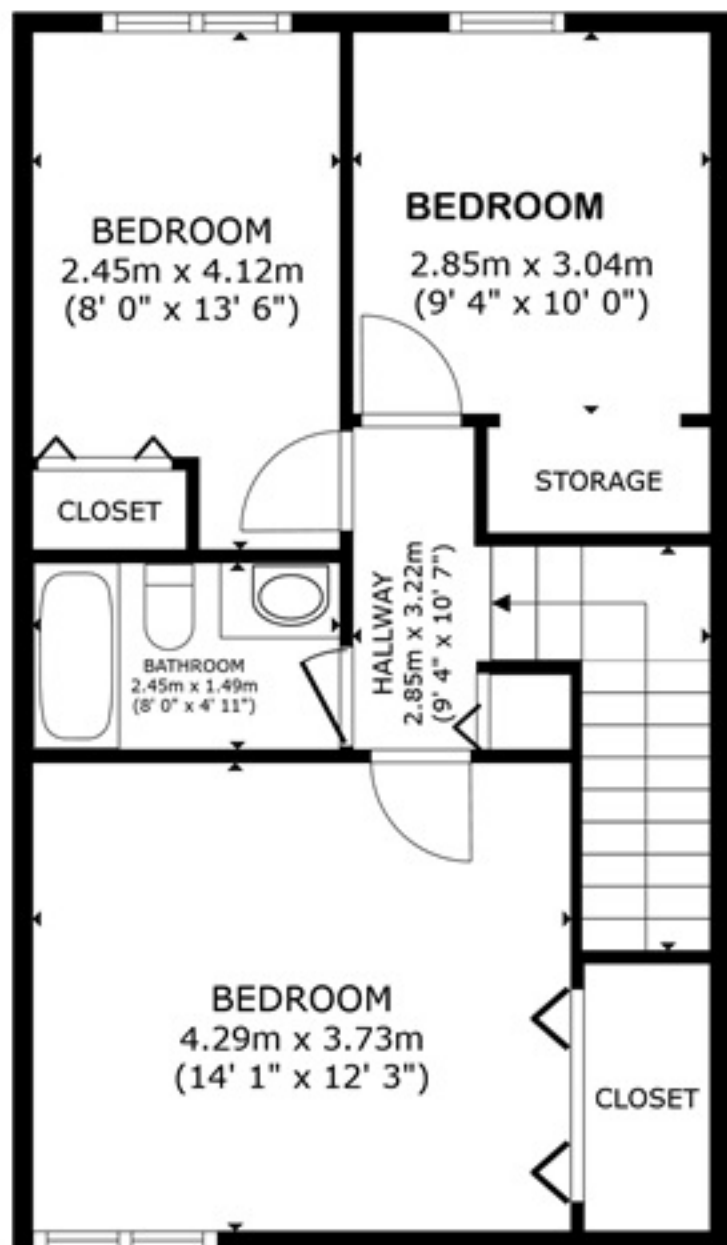
*Prestigious recognition awarded
to the **TOP 1%** nationally of
Royal LePage Real Estate sales
representatives in 2008.*

Find Your Home on the Web at: www.EdmontonHouses.com



MAIN FLOOR

GROSS INTERNAL AREA
FLOOR 1 45.5 m² (489 sq.ft.) FLOOR 2 51.5 m² (555 sq.ft.)
TOTAL : 97.0 m² (1,044 sq.ft.)
SIZES AND DIMENSIONS ARE APPROXIMATE, ACTUAL MAY VARY.



2ND FLOOR

GROSS INTERNAL AREA
 FLOOR 1 45.5 m² (489 sq.ft.) FLOOR 2 51.5 m² (555 sq.ft.)
 TOTAL : 97.0 m² (1,044 sq.ft.)

SIZES AND DIMENSIONS ARE APPROXIMATE, ACTUAL MAY VARY.