

Fine Features of

117, 16903 68 St



Click on text for:

- ☐ Colour Brochure
- ☐ Floor Plan
- ☐ Virtual Tour
- ☐ Optimized tour for Cell Phone
- ☐ Map of Home



Bruce MacPherson, B.Sc., B.A.

**“Relocation Specialist”
Real Estate Professional**

Bus: (780) 481-9060

View this home at: www.EdmontonHouses.com

E-mail: Bruce@EdmontonHouses.com

*Not intended to solicit properties already listed for sale



Noralta Real Estate



2008

*Prestigious recognition
awarded to the TOP 1%
Royal LePage Real Estate
sales representatives in 2008.*

Welcome to
117, 16903 - 68 Street



Schonsee



BRUCE MACPHERSON, B.Sc., B.A.

"Relocation Specialist"

Real Estate Professional

Bus: 780-481-9060

View this home at: www.EdmontonHouses.com

Email: Bruce@EdmontonHouses.com

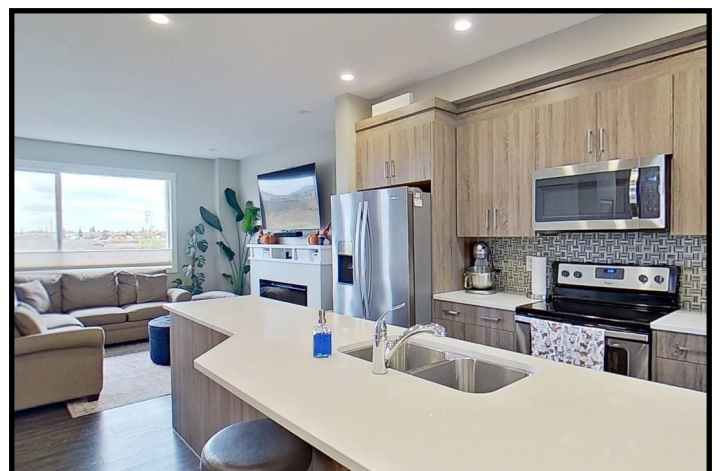
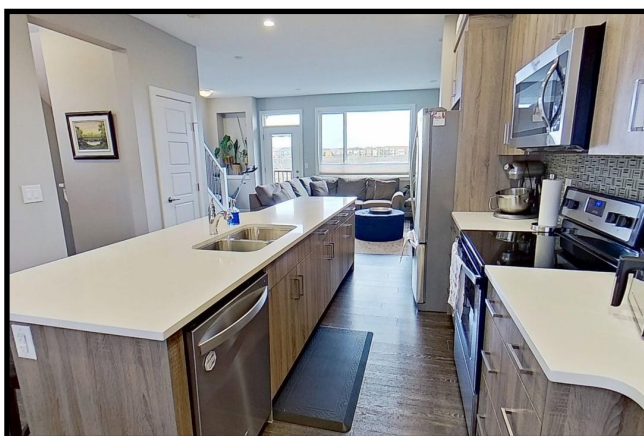
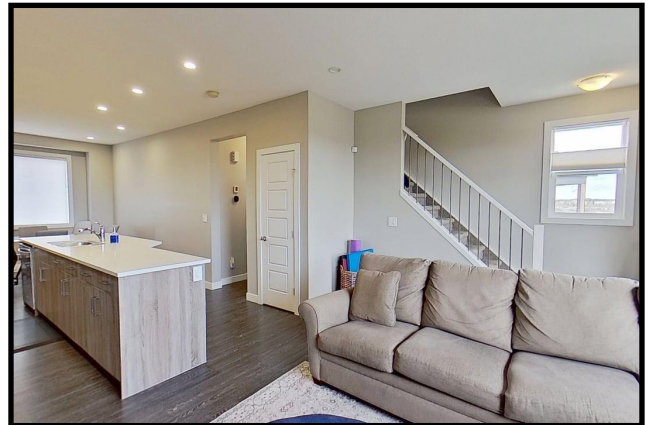


ROYAL LEPAGE

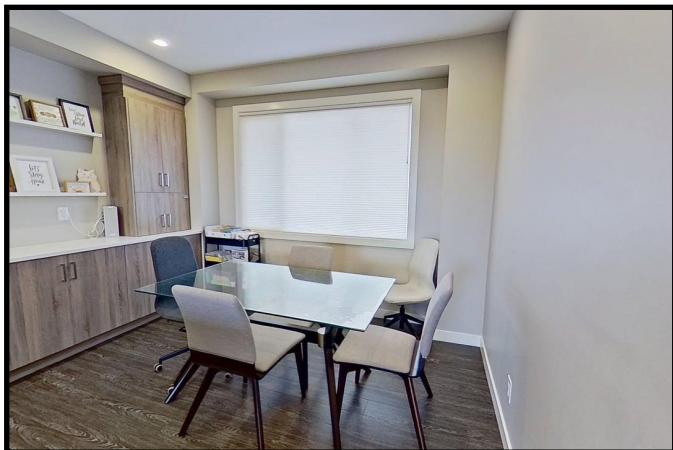
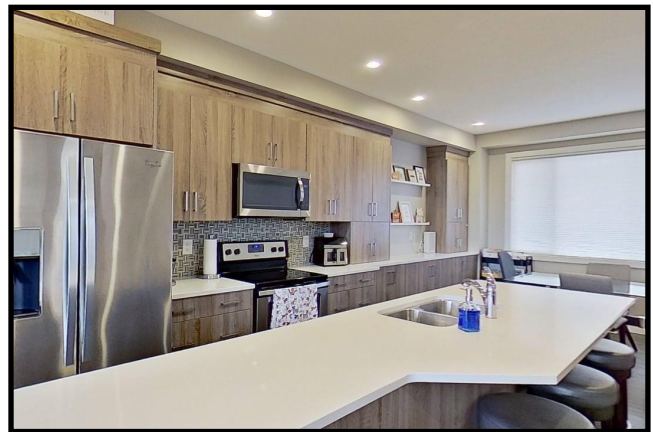
Noralta Real Estate

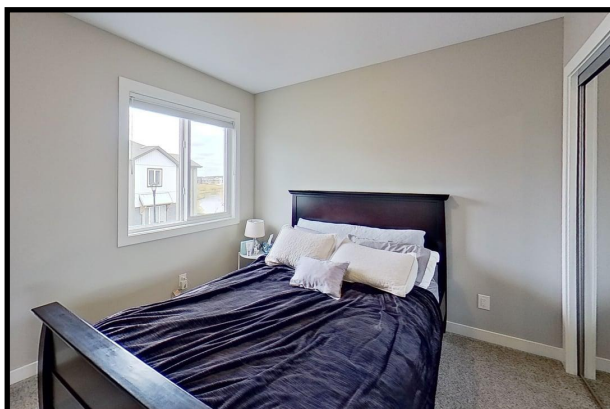
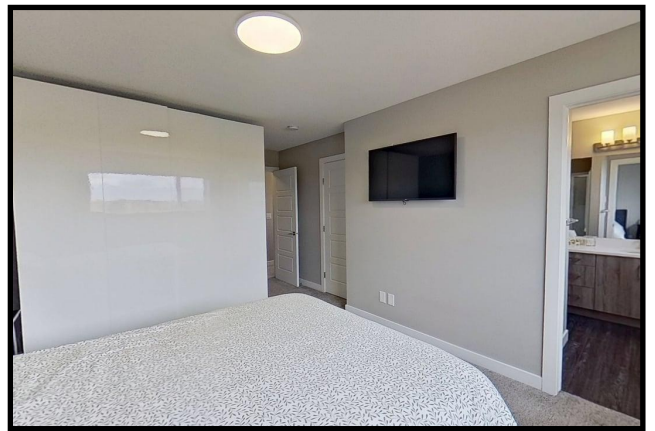
*Prestigious recognition awarded
to the **TOP 1%** nationally of
Royal LePage Real Estate sales
representatives in 2008.*

Not intended to solicit properties already listed for sale



Find Your Home on the Web at: www.EdmontonHouses.com





Find Your Home on the Web at: www.EdmontonHouses.com



117, 6903 - 68 Street



BRUCE MACPHERSON, B.Sc., B.A.

"Relocation Specialist"

Real Estate Professional

Bus: 780-481-9060

View this home at: www.EdmontonHouses.com

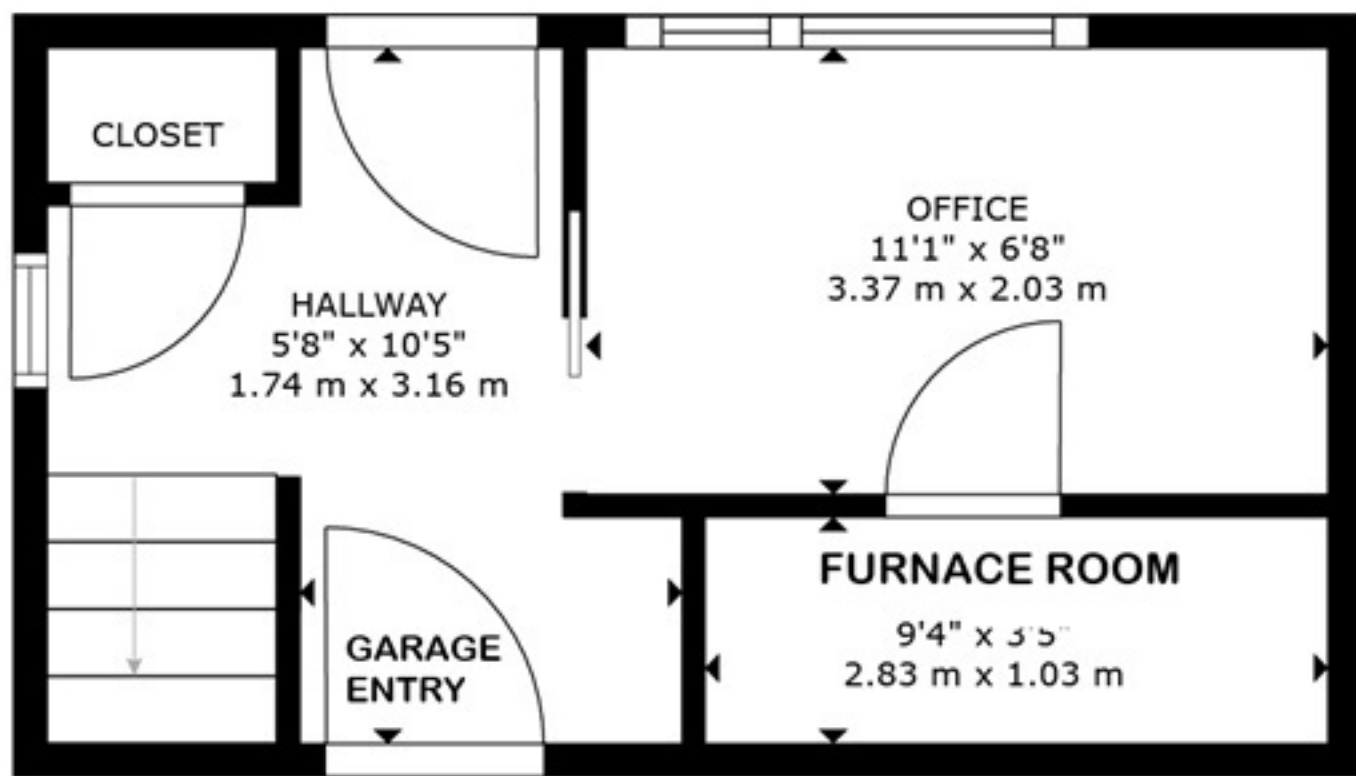
Email: Bruce@EdmontonHouses.com



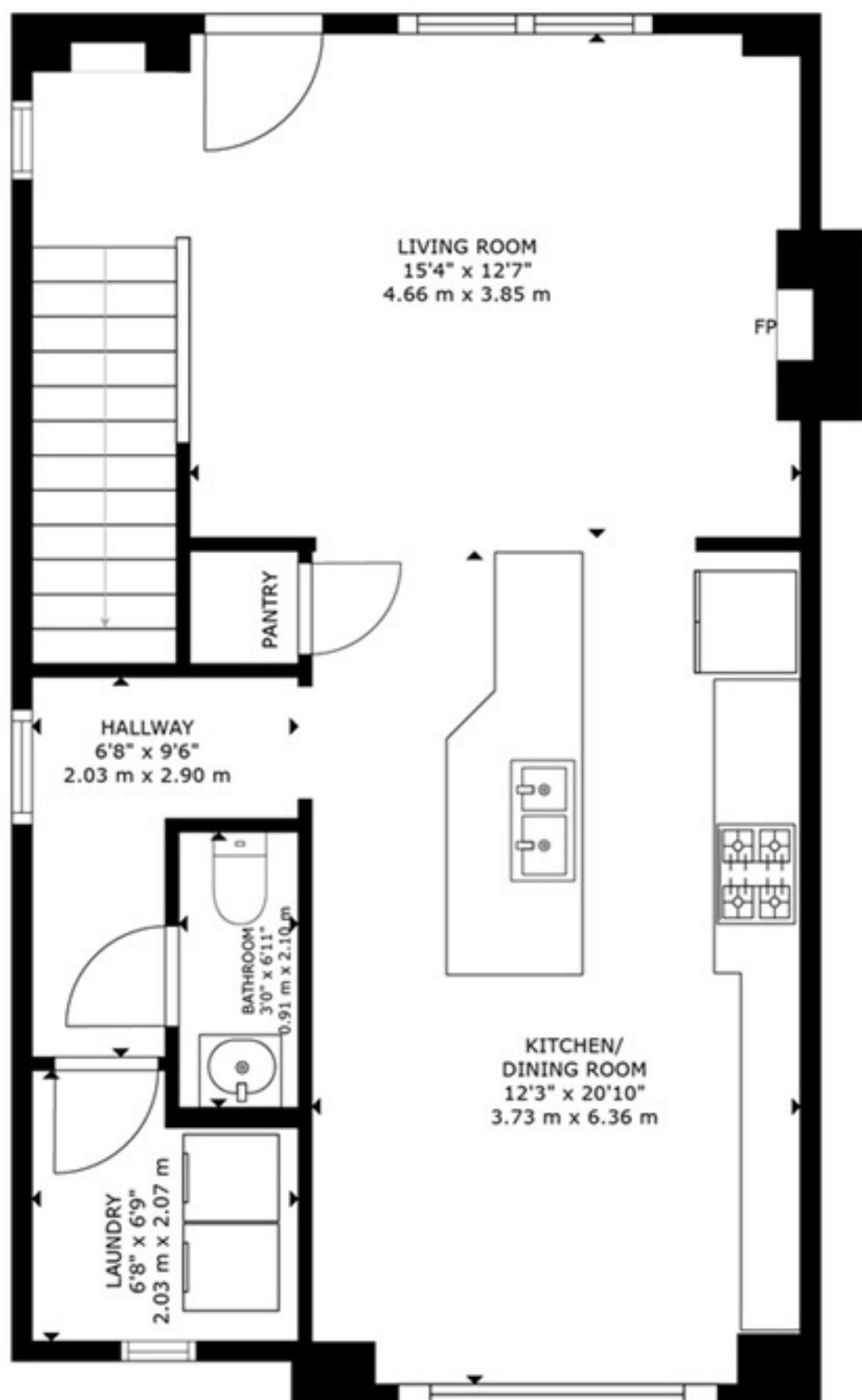
ROYAL LEPAGE
Noralta Real Estate

Prestigious recognition awarded
to the **TOP 1%** nationally of
Royal LePage Real Estate sales
representatives in 2008.

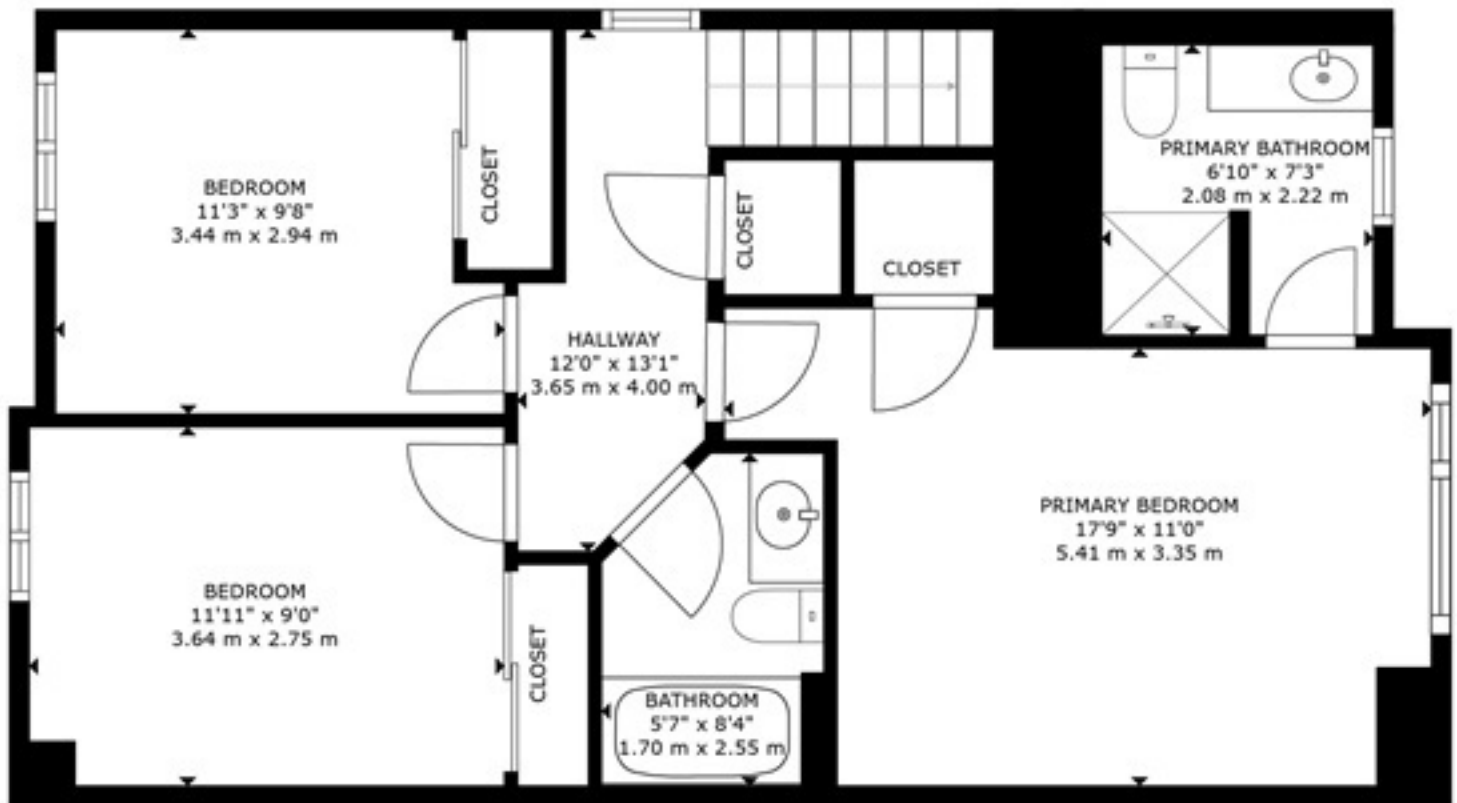
Find Your Home on the Web at: www.EdmontonHouses.com



Ground Floor



2nd Floor



3rd Floor