

Fine Features of 12 Ellesmere Dr



Click on text for:

- ☐ Colour Brochure
- ☐ Floor Plan
- ☐ Virtual Tour
- ☐ Optimized tour for Cell Phone
- ☐ Map of Home



Bruce MacPherson, B.Sc., B.A.

**“Relocation Specialist”
Real Estate Professional**

Bus: (780) 481-9060

View this home at: www.EdmontonHouses.com

E-mail: Bruce@EdmontonHouses.com

*Not intended to solicit properties already listed for sale



Noralta Real Estate



2008

*Prestigious recognition
awarded to the TOP 1%
Royal LePage Real Estate
sales representatives in 2008.*

Welcome to 12 Ellesmere Drive



Erin Ridge



BRUCE MACPHERSON, B.Sc., B.A.

"Relocation Specialist"

Real Estate Professional

Bus: 780-481-9060

View this home at: www.EdmontonHouses.com

Email: Bruce@EdmontonHouses.com

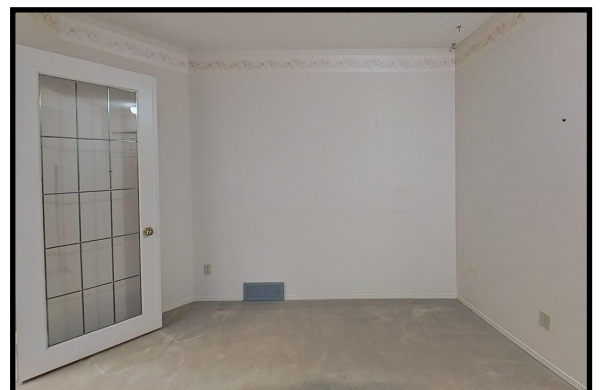


ROYAL LEPAGE

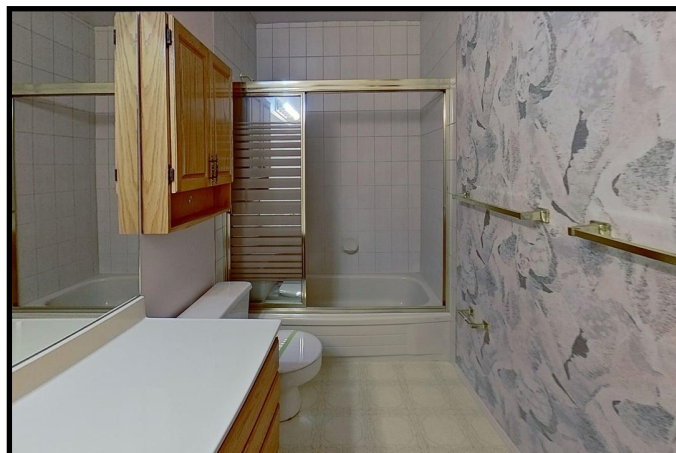
Noralta Real Estate

*Prestigious recognition awarded
to the TOP 1% nationally of
Royal LePage Real Estate sales
representatives in 2008.*

Not intended to solicit properties already listed for sale



Find Your Home on the Web at: www.EdmontonHouses.com



12 Ellesmere Drive



BRUCE MACPHERSON, B.Sc., B.A.

"Relocation Specialist"

Real Estate Professional

Bus: 780-481-9060

View this home at: www.EdmontonHouses.com

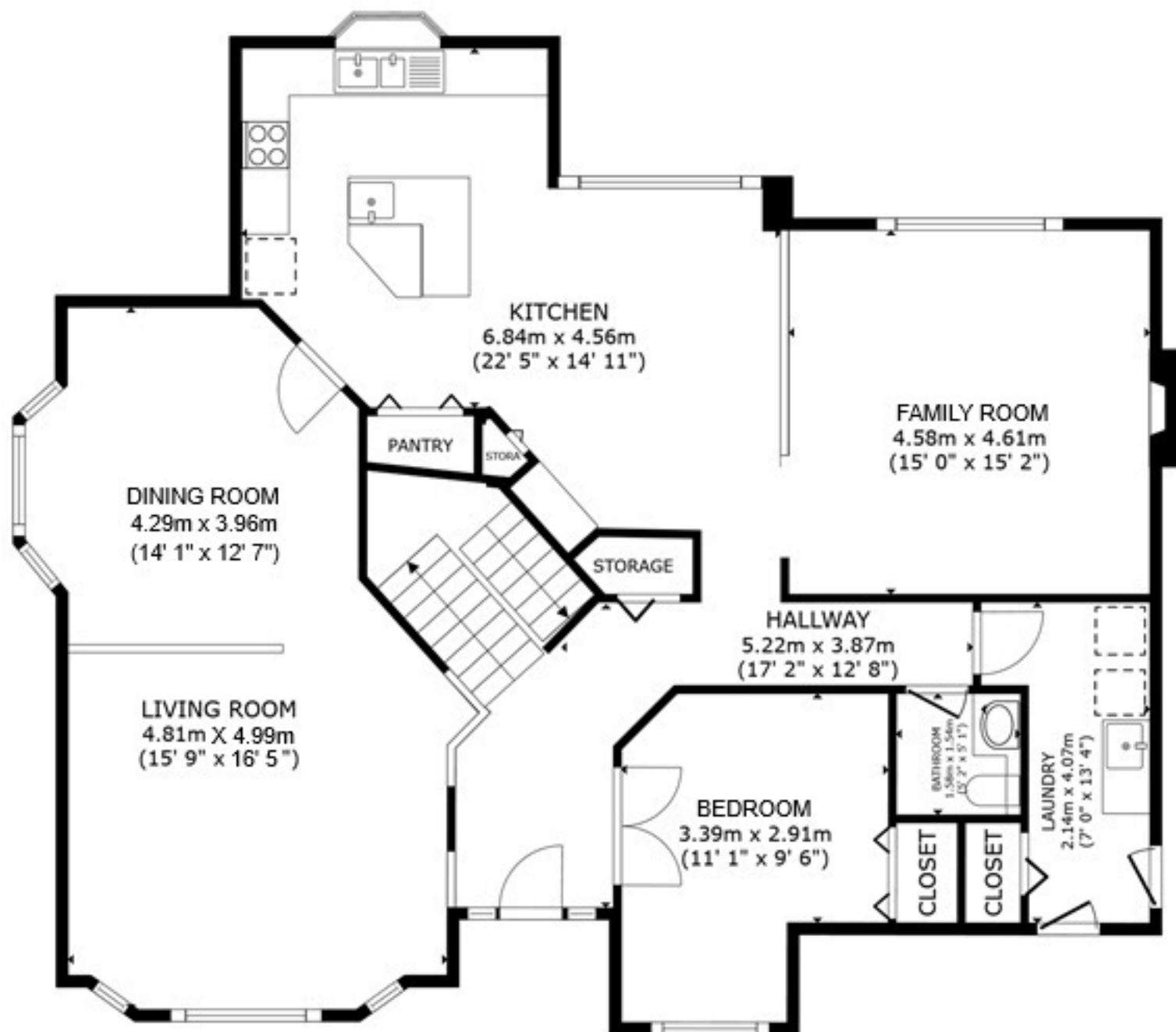
Email: Bruce@EdmontonHouses.com



ROYAL LEPAGE
Noralta Real Estate

*Prestigious recognition awarded
to the TOP 1% nationally of
Royal LePage Real Estate sales
representatives in 2008.*

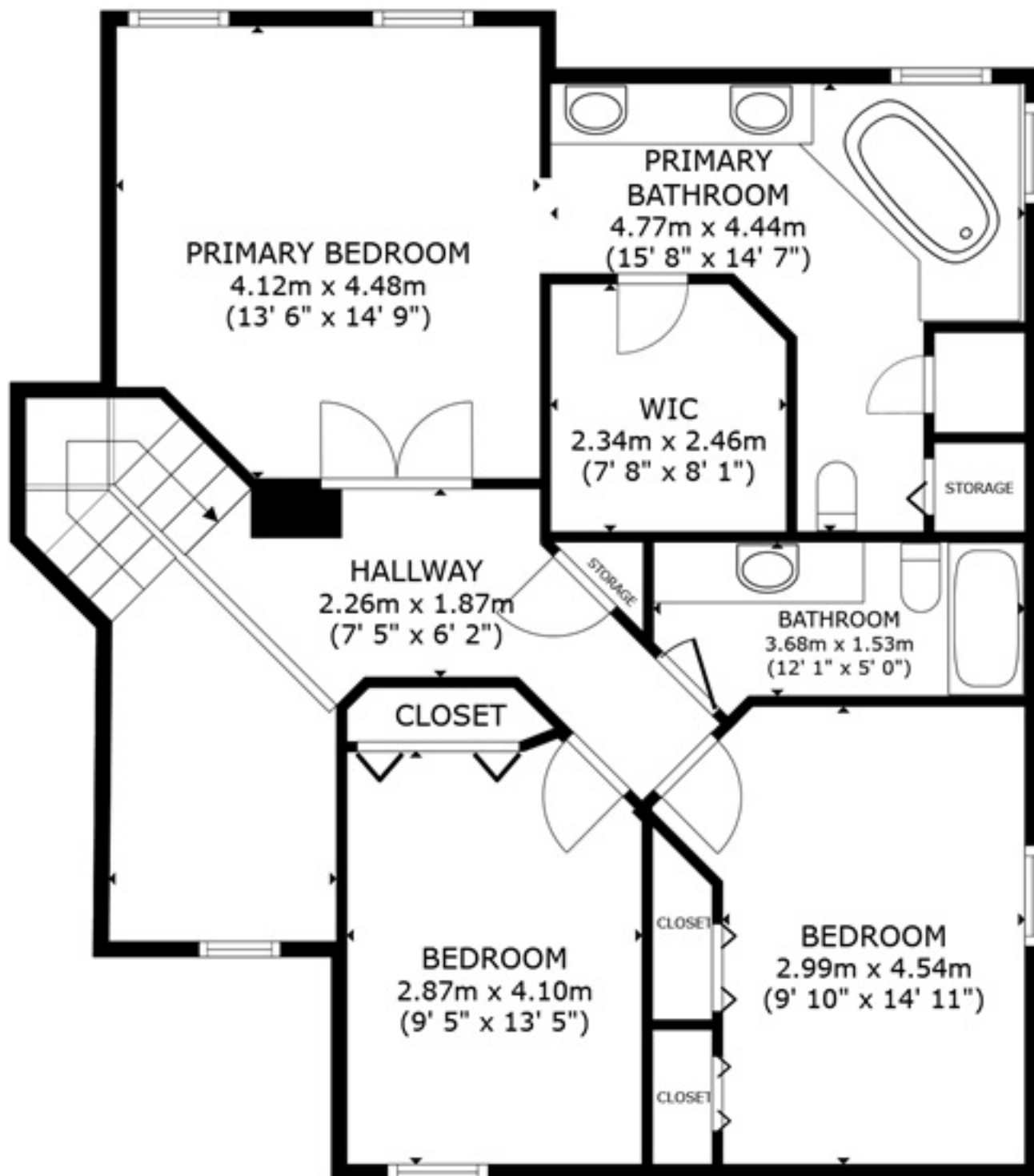
Find Your Home on the Web at: www.EdmontonHouses.com



MAIN FLOOR

GROSS INTERNAL AREA
 BASEMENT 137.1 m² (1,476 sq.ft.) FLOOR 1 137.2 m² (1,476 sq.ft.) FLOOR 2 95.5 m² (1,028 sq.ft.)
 TOTAL : 369.8 m² (3,981 sq.ft.)

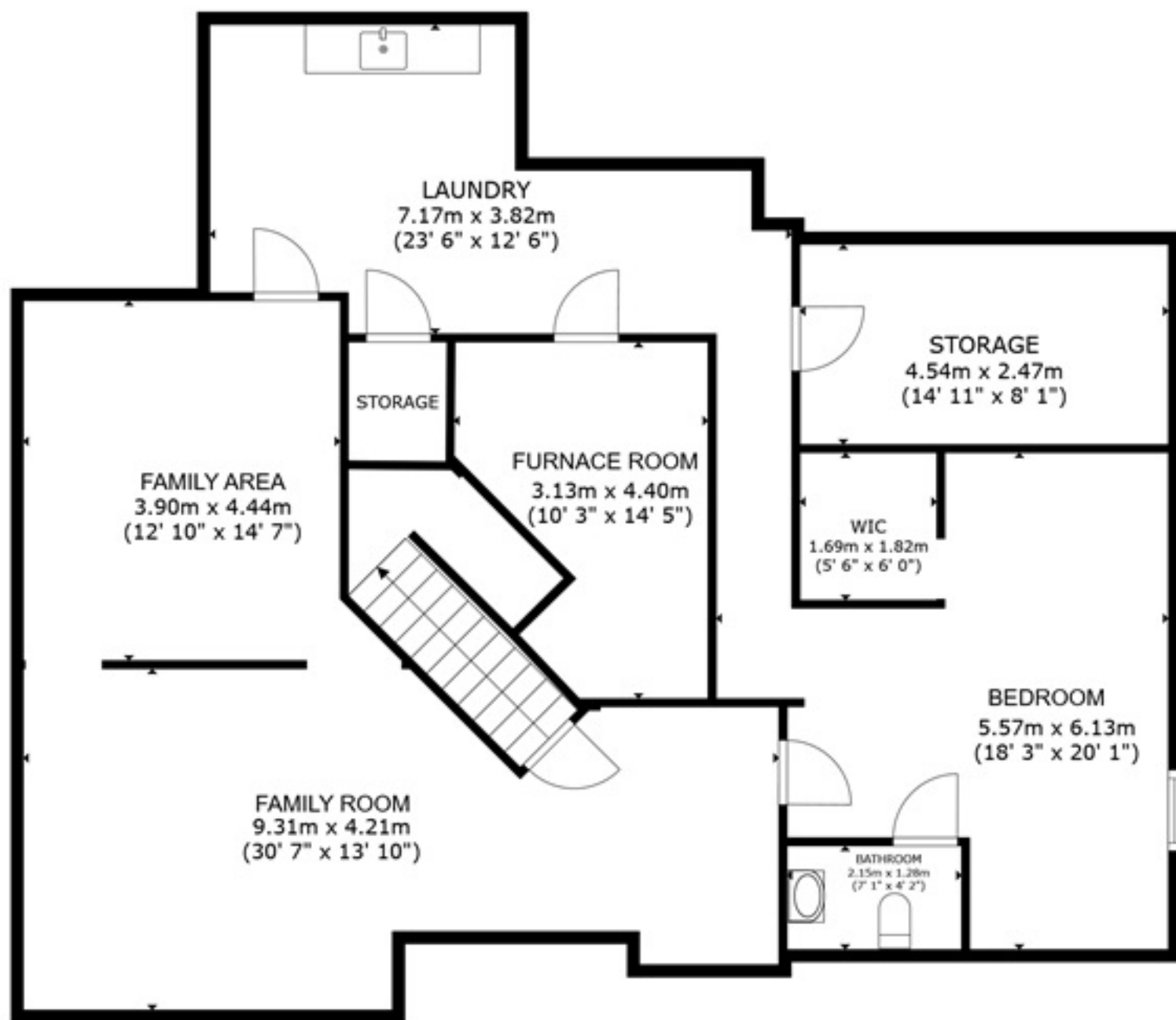
SIZES AND DIMENSIONS ARE APPROXIMATE, ACTUAL MAY VARY.



2nd Floor

GROSS INTERNAL AREA
 BASEMENT 137.1 m² (1,476 sq.ft.) FLOOR 1 137.2 m² (1,476 sq.ft.) FLOOR 2 95.5 m² (1,028 sq.ft.)
 TOTAL : 369.8 m² (3,981 sq.ft.)

SIZES AND DIMENSIONS ARE APPROXIMATE, ACTUAL MAY VARY.



BASEMENT

GROSS INTERNAL AREA
BASEMENT 137.1 m² (1,476 sq.ft.) FLOOR 1 137.2 m² (1,476 sq.ft.) FLOOR 2 95.5 m² (1,028 sq.ft.)

TOTAL : 369.8 m² (3,981 sq.ft.)

SIZES AND DIMENSIONS ARE APPROXIMATE, ACTUAL MAY VARY.