

# Fine Features of

# 404 9945 167 St



Click on text for:

- Colour Brochure
  
- Floor Plan
  
- Virtual Tour
  
- Optimized tour for Cell Phone
  
- Map of Home



## Bruce MacPherson, B.Sc., B.A.

**“Relocation Specialist”  
Real Estate Professional**

**Bus: (780) 481-9060**

**View this home at: [www.EdmontonHouses.com](http://www.EdmontonHouses.com)**

**E-mail: [Bruce@EdmontonHouses.com](mailto:Bruce@EdmontonHouses.com)**

\*Not intended to solicit properties already listed for sale

**ROYAL LEPAGE**

Noralta Real Estate



2008

*Prestigious recognition  
awarded to the TOP 1%  
Royal LePage Real Estate  
sales representatives in 2008.*

*Welcome to  
404, 9945 - 167 Street*



*Century Ridge in Glenwood*



**BRUCE MACPHERSON**, B.Sc., B.A.

**“Relocation Specialist”**

**Real Estate Professional**

Bus: 780-481-9060

View this home at: [www.EdmontonHouses.com](http://www.EdmontonHouses.com)

Email: [Bruce@EdmontonHouses.com](mailto:Bruce@EdmontonHouses.com)



**ROYAL LEPAGE®**

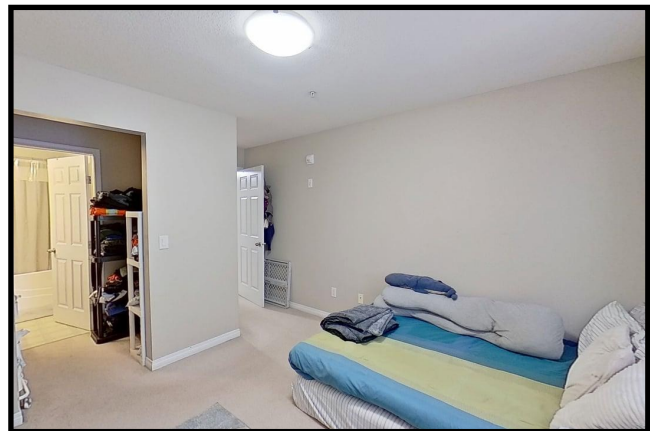
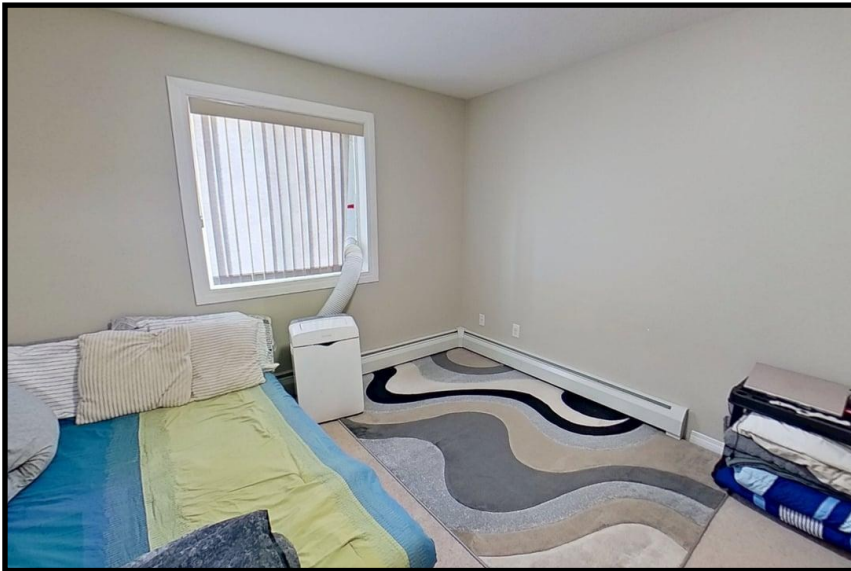
Noralta Real Estate

*Prestigious recognition awarded  
to the TOP 1% nationally of  
Royal LePage Real Estate sales  
representatives in 2008.*

Not intended to solicit properties already listed for sale



Find Your Home on the Web at: [www.EdmontonHouses.com](http://www.EdmontonHouses.com)



404, 9945 - 167 Street



**BRUCE MACPHERSON, B.Sc., B.A.**

**“Relocation Specialist”**

**Real Estate Professional**

Bus: 780-481-9060

View this home at: [www.EdmontonHouses.com](http://www.EdmontonHouses.com)

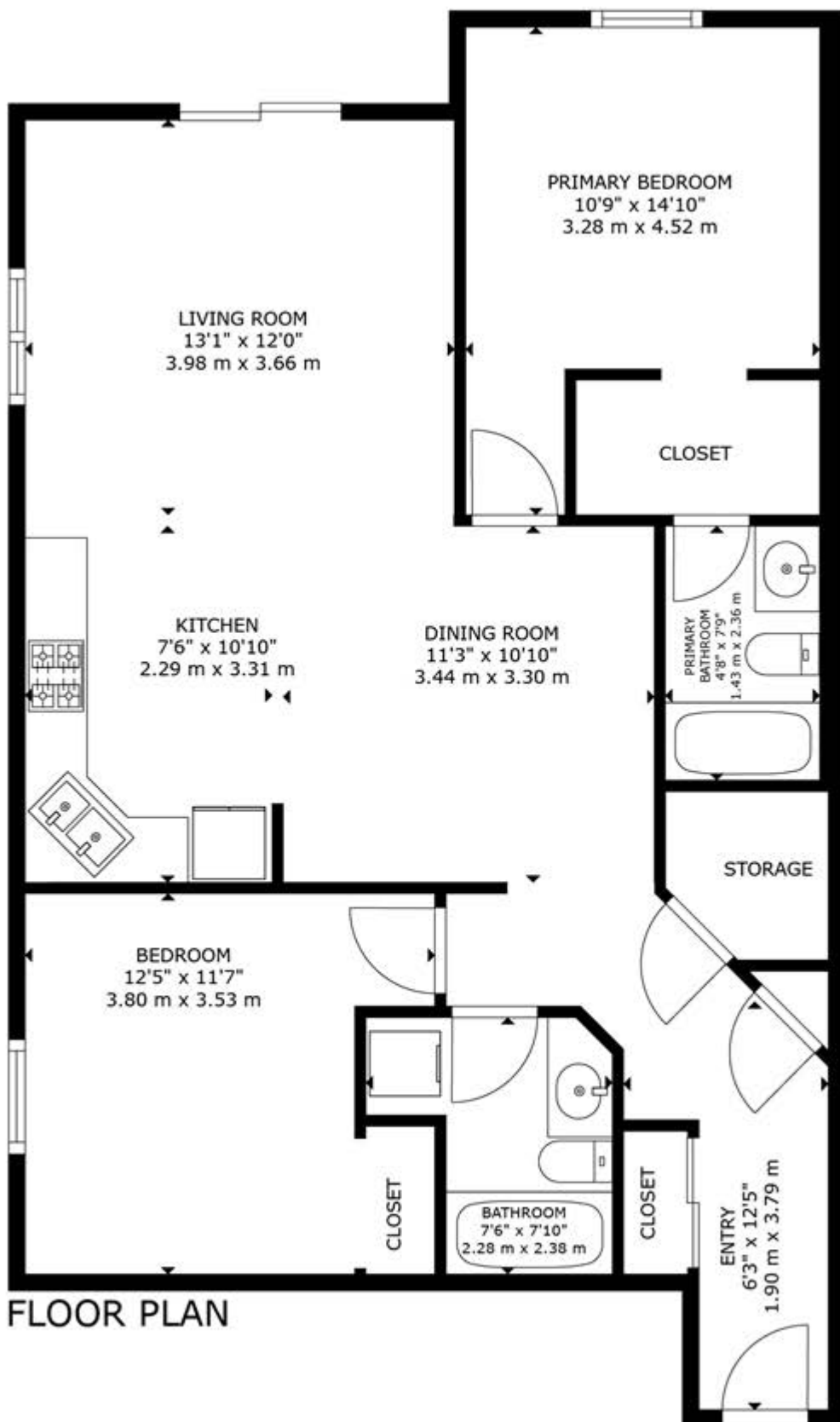
Email: [Bruce@EdmontonHouses.com](mailto:Bruce@EdmontonHouses.com)



Noralta Real Estate

*Prestigious recognition awarded to the TOP 1% nationally of Royal LePage Real Estate sales representatives in 2008.*

Find Your Home on the Web at: [www.EdmontonHouses.com](http://www.EdmontonHouses.com)



**FLOOR PLAN**

GROSS INTERNAL AREA  
 FLOOR PLAN: 898 sq. ft , 83 m<sup>2</sup>  
 SIZES AND DIMENSIONS ARE APPROXIMATE, ACTUAL MAY VARY.