

# Fine Features of 32 Garden Valley Dr



Click on text for:

- Colour Brochure
- Floor Plan
- Virtual Tour
- Optimized tour for Cell Phone
- Map of Home



**Bruce MacPherson, B.Sc., B.A.**

**“Relocation Specialist”  
Real Estate Professional**

**Bus: (780) 481-9060**

**View this home at: [www.EdmontonHouses.com](http://www.EdmontonHouses.com)**

**E-mail: [Bruce@EdmontonHouses.com](mailto:Bruce@EdmontonHouses.com)**

\*Not intended to solicit properties already listed for sale

**ROYAL LEPAGE**

Noralta Real Estate



*Prestigious recognition  
awarded to the TOP 1%  
Royal LePage Real Estate  
sales representatives in 2008.*

2008

# Welcome to 32 Garden Valley Drive



## Southridge



**BRUCE MACPHERSON**, B.Sc., B.A.

“Relocation Specialist”

Real Estate Professional

Bus: 780-481-9060

View this home at: [www.EdmontonHouses.com](http://www.EdmontonHouses.com)

Email: [Bruce@EdmontonHouses.com](mailto:Bruce@EdmontonHouses.com)

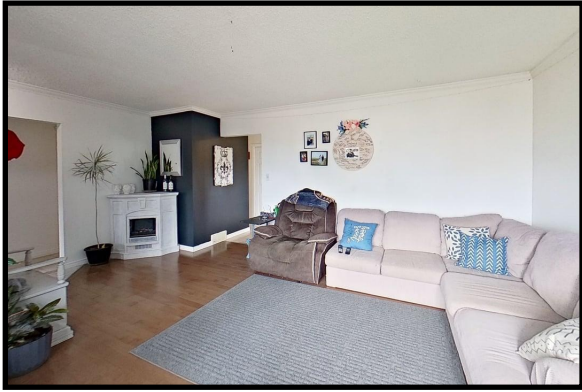


**ROYAL LEPAGE**

Noralta Real Estate

Prestigious recognition awarded  
to the **TOP 1%** nationally of  
Royal LePage Real Estate sales  
representatives in 2008.

Not intended to solicit properties already listed for sale



Find Your Home on the Web at: [www.EdmontonHouses.com](http://www.EdmontonHouses.com)



32 Garden Valley Drive



**BRUCE MACPHERSON, B.Sc., B.A.**

“Relocation Specialist”

Real Estate Professional

Bus: 780-481-9060

View this home at: [www.EdmontonHouses.com](http://www.EdmontonHouses.com)

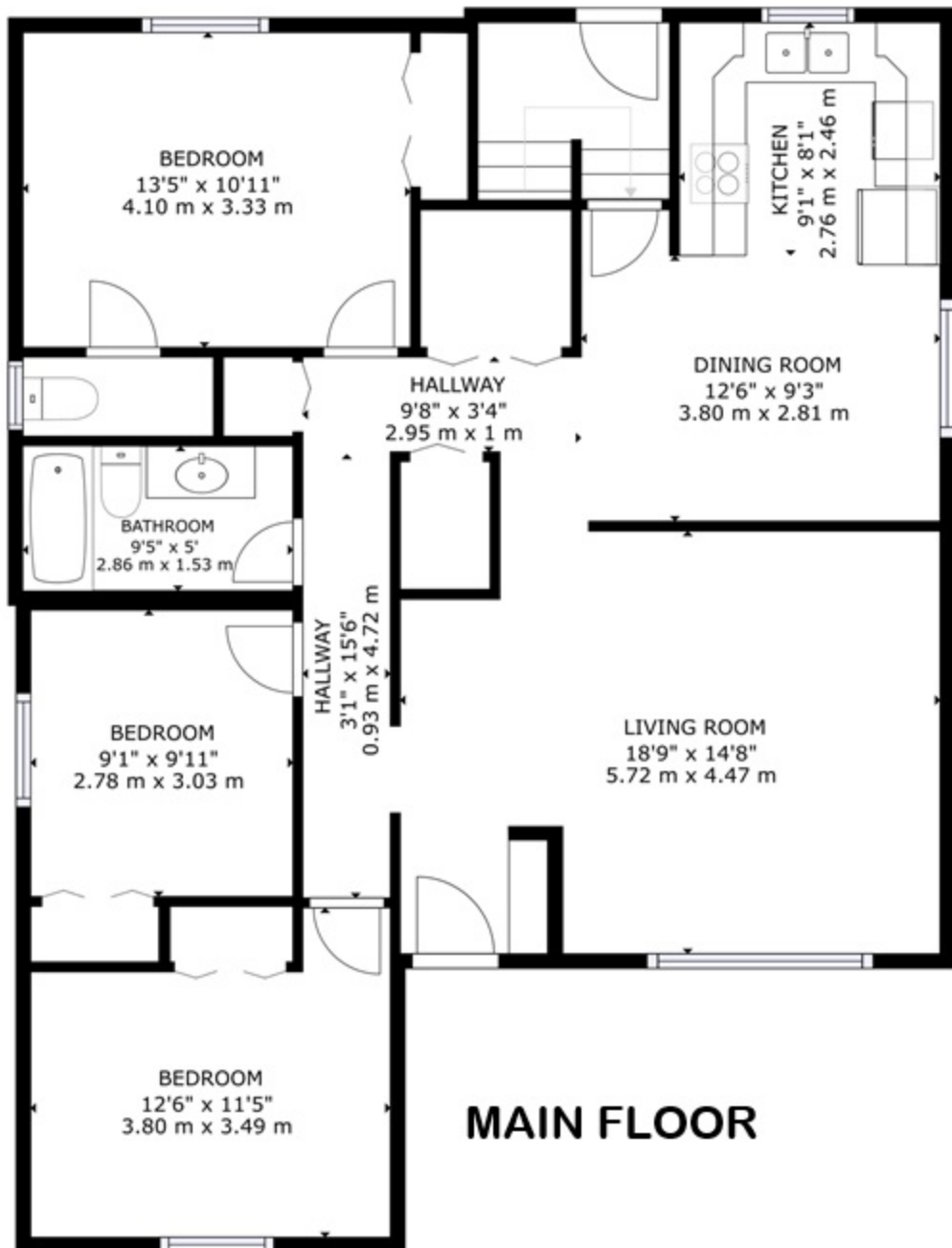
Email: [Bruce@EdmontonHouses.com](mailto:Bruce@EdmontonHouses.com)



Noralta Real Estate

Prestigious recognition awarded to the **TOP 1%** nationally of Royal LePage Real Estate sales representatives in 2008.

Find Your Home on the Web at: [www.EdmontonHouses.com](http://www.EdmontonHouses.com)

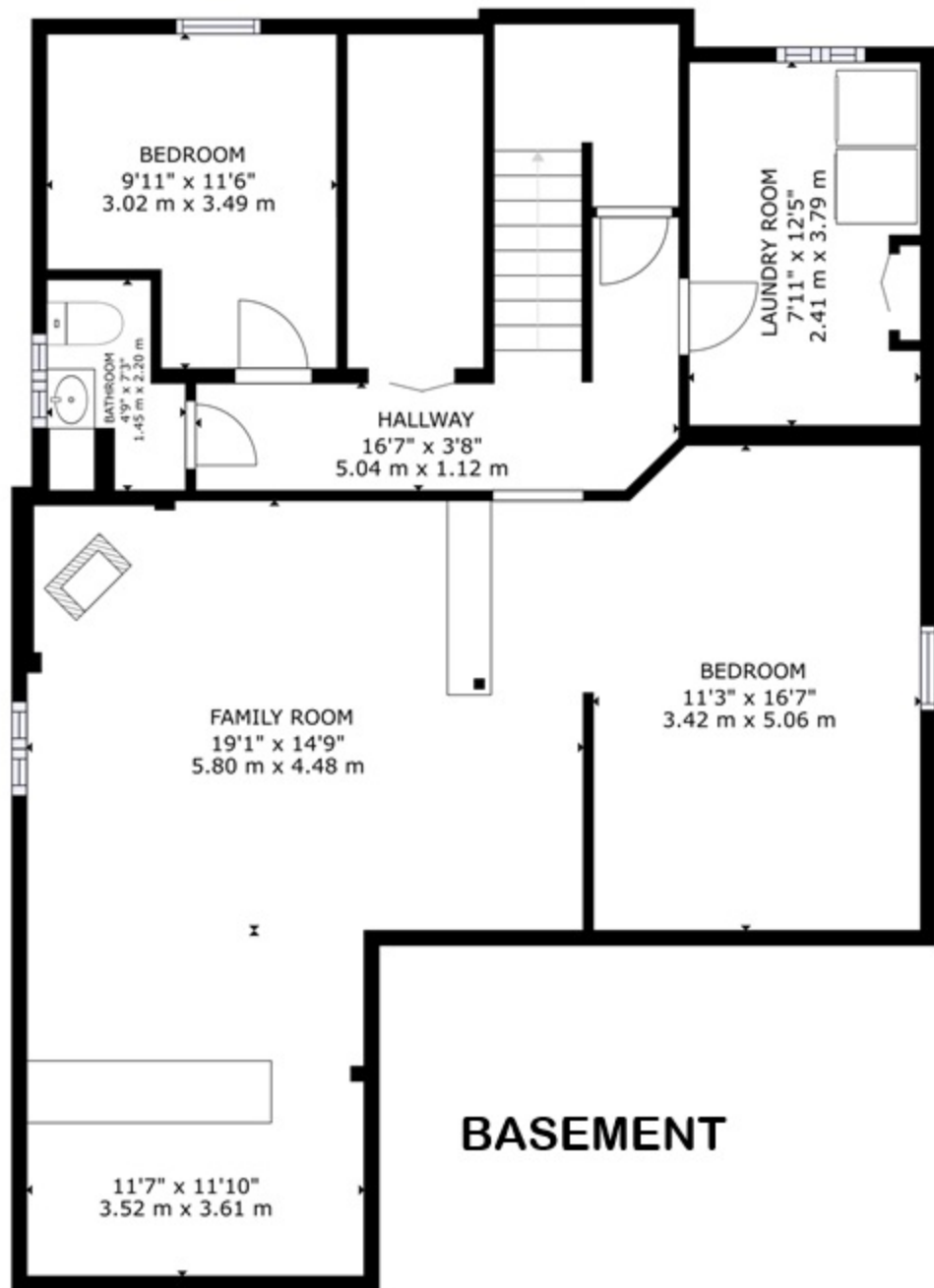


GROSS INTERNAL AREA

FLOOR 1: 1056 sq ft, 98.11 m<sup>2</sup>, FLOOR 2: 1143 sq ft, 106.14 m<sup>2</sup>

TOTAL: 2199 sq ft, 204.25 m<sup>2</sup>

SIZES AND DIMENSIONS ARE APPROXIMATE, ACTUAL MAY VARY.



GROSS INTERNAL AREA

FLOOR 1: 1056 sq ft, 98.11 m<sup>2</sup>, FLOOR 2: 1143 sq ft, 106.14 m<sup>2</sup>  
 TOTAL: 2199 sq ft, 204.25 m<sup>2</sup>

SIZES AND DIMENSIONS ARE APPROXIMATE, ACTUAL MAY VARY.